

PLANNING INFORMATION

Although the 600 Series offers a wide range of designs and configurations, the basic planning considerations for all models have much in common. As you integrate Sub-Zero units into your overall plan, review installation requirements for your particular units. The illustration to the right along with the Pre-Installation Specifications chart provide planning information for all Sub-Zero 600 Series units – framed, overlay and stainless steel.

Allow units to open a minimum of 90 degrees or you'll have problems removing drawers. With the door opening 90 degrees, you may have to move drawers slightly to clear the door interior. Refer to the minimum door clearances in the Pre-Installation Specifications chart.

- For corner installations, allow for a minimum three-inch filler so that the door can open to 90 degrees. If you're using raised panels, consider using a wider filler.
- When units are installed side by side, use a filler strip. The width of this filler strip will vary depending on the configuration and panels you use.
- Be sure to add the filler strip width to your finished rough-in dimension. In any side by side installation, add an additional one-half inch to your combined numbers.

IMPORTANT NOTE: Refer to the full-scale illustrations at the end of this section for specifics on door openings and filler size alternatives.

INTEGRATING CABINETRY

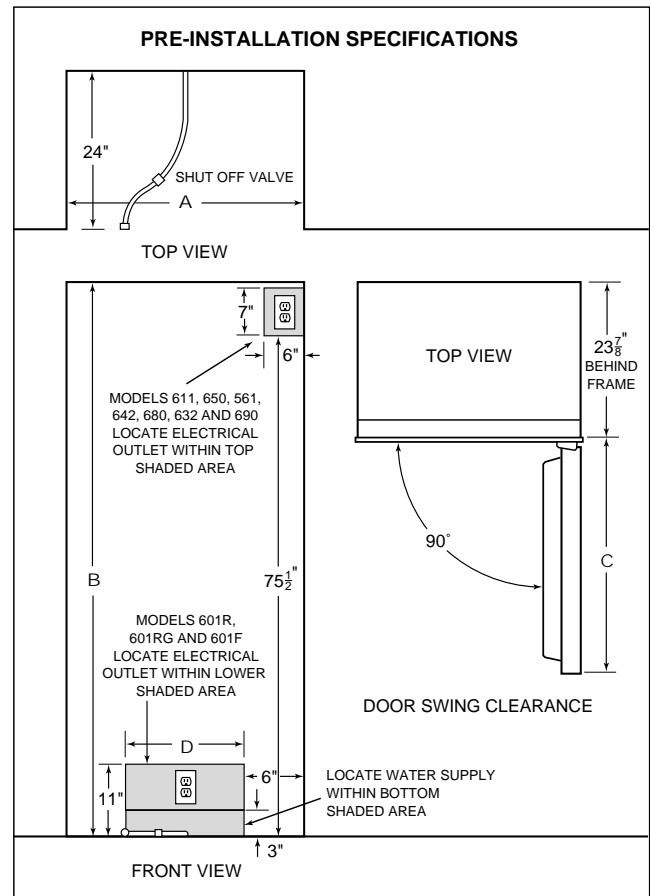
In your plan for panels, be sure you are working with the Sub-Zero panel design family called for in your design. If your customer has chosen the stainless steel design, the unit will be shipped complete with wrapped stainless steel doors and handle hardware. You will not have to install panels.

If you and your client have ordered either framed or overlay design models, you will be adding panels to give the unit the custom Sub-Zero look. Refer to the framed or overlay sections for further details.

BLOCKING FOR SAFETY

To prevent the unit from tipping forward and provide a stable installation, the unit must be secured in place with an anti-tip device. If there is a solid soffit above the unit with clearance between the unit and the soffit of one inch or less, you won't need to block the unit. But for installations with clearances of more than one inch, **you must block the unit** with the anti-tip kit (wood block and hardware) provided with each Sub-Zero 600 Series unit.

The 600 Series Installation Guide packed with the appliance will give you step-by-step procedures for making sure the unit is installed properly.



Model	601R*	601F	611	650	561	642	680	632	690
Finished Rough Opening (A)	35 1/2"	35 1/2"	29 1/2"	35 1/2"	35 1/2"	41 1/2"	41 1/2"	47 1/2"	47 1/2"
Finished Rough Opening (B)	72 3/4"	72 3/4"	83 3/4"	83 3/4"	83 3/4"	83 3/4"	83 3/4"	83 3/4"	83 3/4"
Minimum Door Clearance at 90° (C)	36 1/16"	36 1/16"	30 1/8"	36 1/16"	20 3/4"	25 9/16"	25 9/16"	29 1/4"	29 1/4"
Minimum Height Required (levelers in)	72 3/4"	72 3/4"	82 7/8"	82 7/8"	82 7/8"	82 7/8"	82 7/8"	82 7/8"	82 7/8"
Water Supply Location (D)	N/A	24"	18"	18"	18"	18"	18"	18"	18"

*Pre-installation specifications for Model 601RG are identical to the Model 601R.